

Suredrive™

MOD04V Volvo Installation Instructions – April 2021

This report DOES NOT replace the official installation instructions. See Installation of the Suredrive™ Coupling.

Unit 5 – 3125 Van Horne Road
Qualicum Beach, B.C. Canada. V9K 2R3
Tel: (250) 752-1790 Fax: (250) 752-2791
E-Mail: info@suredrivemarine.com
Online: www.suredrivemarine.com

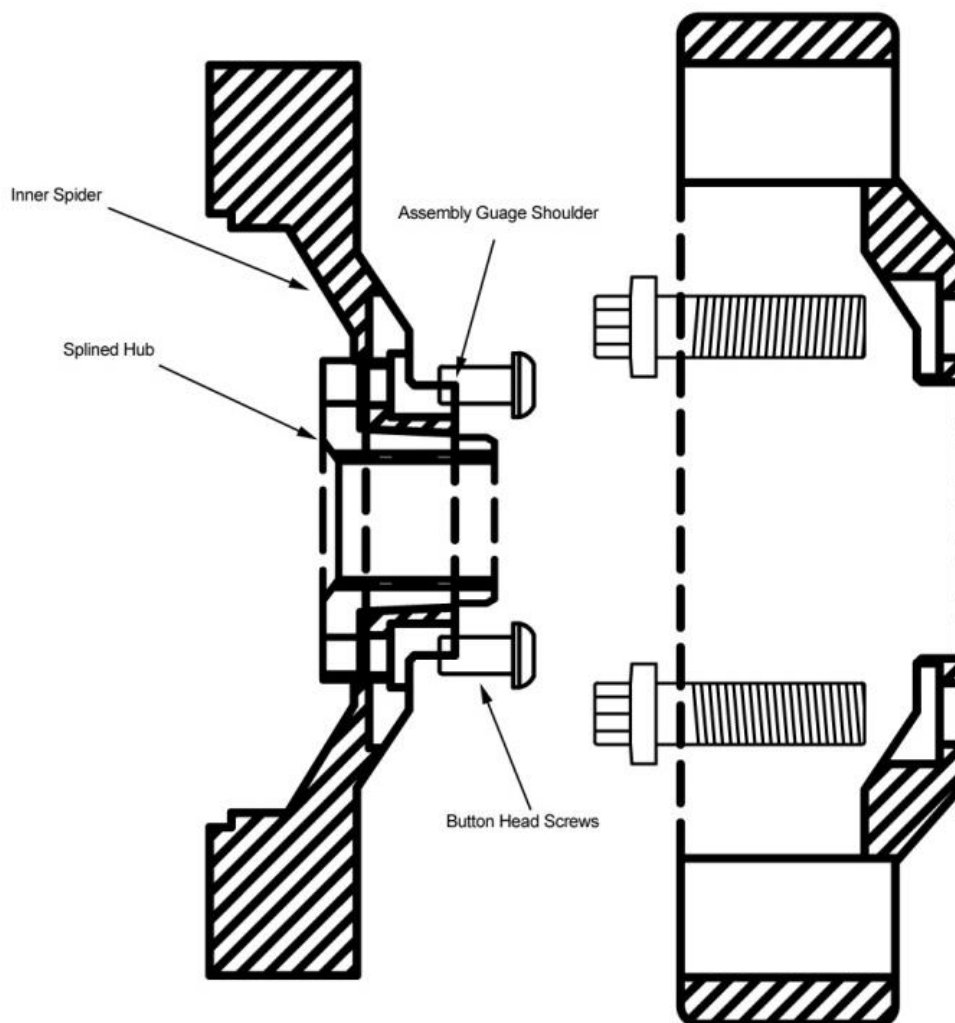
Copyright © 2018 NEXTWAVE MARINE SYSTEMS INC. ALL RIGHTS RESERVED

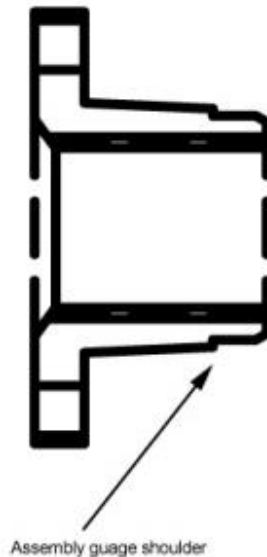


The manufacturer accepts no liability, under any circumstances whatsoever, for any consequential damage or loss suffered by anyone as a result of using or being unable to use the SUREDRIVE™

Suredrive™ Outer Drive Ring Installation

Remove the 8 flywheel retainer bolts and discard the old drive hub. Install Suredrive outer drive ring with 8 special supplied bolts. Torque to 45 ft lbs Installation of outer ring is complete.





Inner Spider Installation

- Engage splined hub with transmission input shaft spline Flange side toward transmission. Tap small end of the hub by placing a flat object on the end and tapping with a hammer until the small end of the hub is flush with the transmission input shaft outer end.
- It is important to have the hub correctly located. Make certain the round key is in the groove of the hub, and then slide the inner spider onto the hub. Slightly tap with the handle of the hammer to locate the spider.
- Insert the 6 Allen head bolts and engage into the threaded holes in the splined hub flange.
- To obtain the spline locking onto the transmission worn spline, the bolts need to be tightened in a circular fashion a quarter of a turn at a time until the outer face of the inner spider is in-line with the shoulder located on the splined hub outer end.
- Important to force the inner spider to the shoulder of the splined hub or slightly past. This will provide the positive lock up onto the worn transmission spline. Rotate the transmission by hand to make certain that there is no interference in the assembly. The transmission is ready to be mounted onto the engine

Tools Required for Installation

- 4mm Allen Key
- 10mm, 12 point Socket